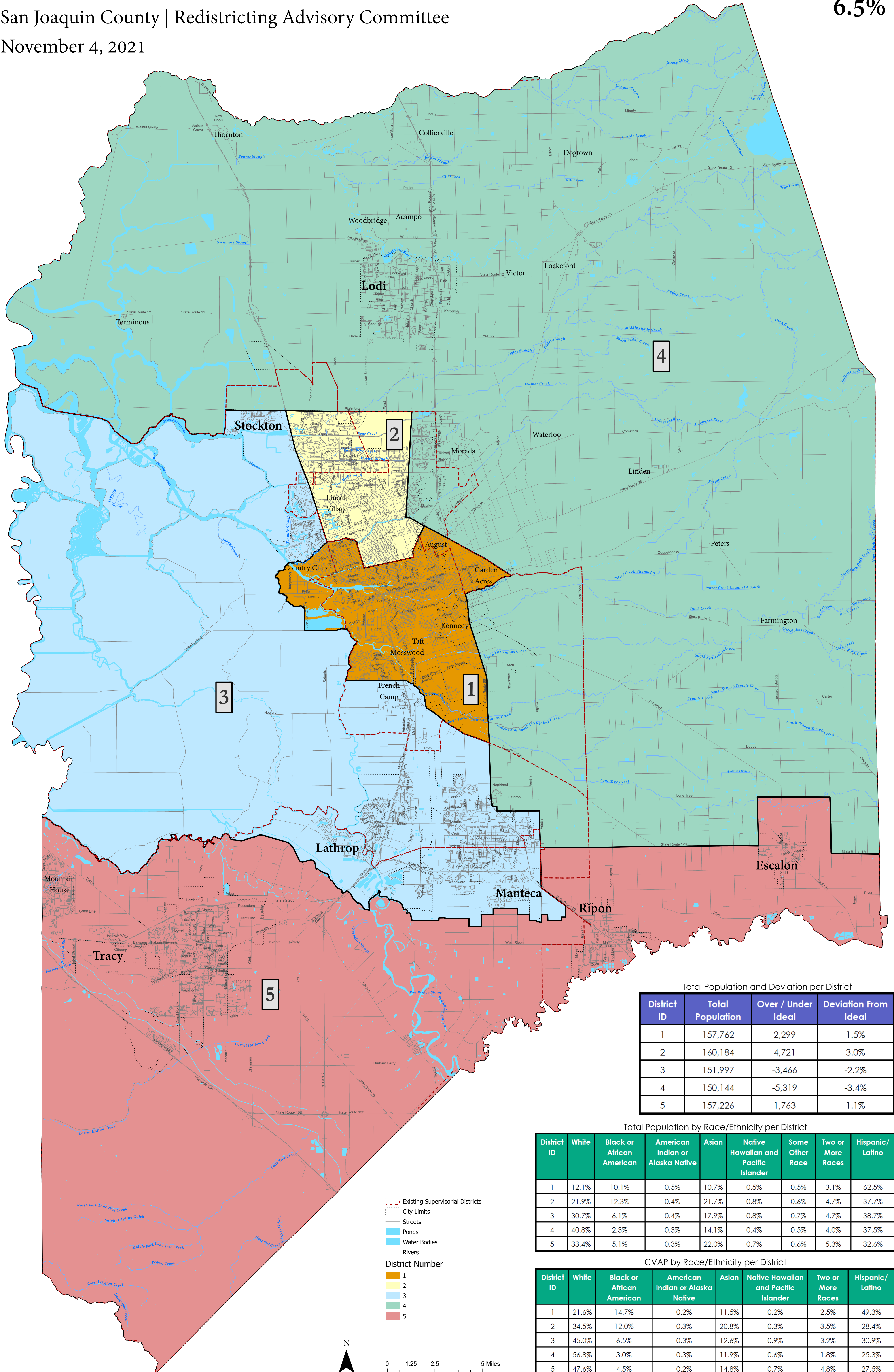


# Supervisory Districts Draft Plan E

San Joaquin County | Redistricting Advisory Committee

November 4, 2021

Total Deviation  
**6.5%**



Total Population and Deviation per District

District ID	Total Population	Over / Under Ideal	Deviation From Ideal
1	157,762	2,299	1.5%
2	160,184	4,721	3.0%
3	151,997	-3,466	-2.2%
4	150,144	-5,319	-3.4%
5	157,226	1,763	1.1%

Total Population by Race/Ethnicity per District

District ID	White	Black or African American	American Indian or Alaska Native	Asian	Native Hawaiian and Pacific Islander	Some Other Race	Two or More Races	Hispanic/Latino
1	12.1%	10.1%	0.5%	10.7%	0.5%	0.5%	3.1%	62.5%
2	21.9%	12.3%	0.4%	21.7%	0.8%	0.6%	4.7%	37.7%
3	30.7%	6.1%	0.4%	17.9%	0.8%	0.7%	4.7%	38.7%
4	40.8%	2.3%	0.3%	14.1%	0.4%	0.5%	4.0%	37.5%
5	33.4%	5.1%	0.3%	22.0%	0.7%	0.6%	5.3%	32.6%

CVAP by Race/Ethnicity per District

District ID	White	Black or African American	American Indian or Alaska Native	Asian	Native Hawaiian and Pacific Islander	Two or More Races	Hispanic/Latino
1	21.6%	14.7%	0.2%	11.5%	0.2%	2.5%	49.3%
2	34.5%	12.0%	0.3%	20.8%	0.3%	3.5%	28.4%
3	45.0%	6.5%	0.3%	12.6%	0.9%	3.2%	30.9%
4	56.8%	3.0%	0.3%	11.9%	0.6%	1.8%	25.3%
5	47.6%	4.5%	0.2%	14.8%	0.7%	4.8%	27.5%

- Existing Supervisory Districts
  - City Limits
  - Streets
  - Ponds
  - Water Bodies
  - Rivers
- District Number
- 1
  - 2
  - 3
  - 4
  - 5

